

# FCT



**RF  
Coaxial  
Connectors**

**HF  
Koaxial  
Kontakte**



Catalog No.:  
*Katalog Nr.:*  
**RF 12/2006.3000**

**Dual language content:** English text first in black, German text second in light-blue italics

<http://www.fctgroup.com>



---

**Please Note**

We accept no responsibility for the rights of third parties with regards to any of the herein printed tables or descriptions. With this catalog components are illustrated, features are not guaranteed. Availability and technical alterations are subject to change without prior warning. We accept no responsibility for human error or misprints within this catalog. We offer no guarantee for the completeness of any herein printed reports. Reproduction of this catalog and utilization of its contents are prohibited, unless otherwise expressly stated!

December 2006      © FCT






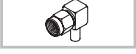
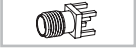






**Anmerkung**

*Für die angegebenen Beschreibungen und Tabellen wird keine Gewähr bezüglich der Freiheit und Rechten Dritter übernommen. Mit den Angaben werden die Bauelemente spezifiziert, nicht Eigenschaften zugesichert. Liefermöglichkeiten und technische Änderungen ohne Vorankündigung, Irrtum und Druckfehler vorbehalten. Für die Abhandlungen kann keine Garantie auf Vollständigkeit übernommen werden. Vervielfältigung dieser Unterlage sowie Verwertung ihres Inhalts sind unzulässig, soweit nicht ausdrücklich zugestanden!*

Dezember 2006      © FCT

# List of Contents

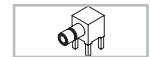
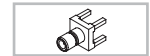
## Inhaltsverzeichnis

<b>General Information</b> .....	<b>6</b>	
<i>Allgemeine Informationen</i> .....	<i>6</i>	
General Connector Characteristics .....	6	
<i>Allgemeine Merkmale der Kontakte</i> .....	<i>6</i>	
Identification of Platings in the Part Number .....	7	
<i>Kennzeichnung der Oberflächenbeschichtung in der Teilenummer</i> .....	<i>7</i>	
Identification of Contact Type in the Part Number .....	7	
<i>Kennzeichnung der Kontaktart in der Teilenummer</i> .....	<i>7</i>	
Termination .....	7	
<i>Anschlussart</i> .....	<i>7</i>	
<b>SMA Coaxial Connectors</b> .....	<b>8</b>	
<i>SMA Koaxialkontakte</i> .....	<i>8</i>	
Technical Data .....	8	
<i>Technische Daten</i> .....	<i>8</i>	
SMA Coaxial Connectors, Mating Area Dimensions .....	9	
<i>SMA Koaxialkontakte, Abmessungen Steckbereich</i> .....	<i>9</i>	
Dimensions Straight Cable Termination, Semi-rigid (SMA) .....	9	
<i>Abmessungen gerader Kabelanschluss, semi-rigid (SMA)</i> .....	<i>9</i>	
Dimensions Straight Cable Termination (SMA) .....	10	
<i>Abmessungen gerader Kabelanschluss (SMA)</i> .....	<i>10</i>	
Dimensions Straight Cable Termination, Semi-rigid, Bulkhead (SMA) .....	10	
<i>Abmessungen gerader Kabelanschluss, semi-rigid, Gehäusedurchführung (SMA)</i> .....	<i>10</i>	
Dimensions Straight Cable Termination, Bulkhead (SMA) .....	10	
<i>Abmessungen gerader Kabelanschluss, Gehäusedurchführung (SMA)</i> .....	<i>10</i>	
Dimensions Right Angled Cable Termination, Semi-rigid (SMA) .....	11	
<i>Abmessungen abgewinkelter Kabelanschluss, semi-rigid (SMA)</i> .....	<i>11</i>	
Dimensions Right Angled Cable Termination (SMA) .....	11	
<i>Abmessungen abgewinkelter Kabelanschluss (SMA)</i> .....	<i>11</i>	
Dimensions Straight PCB Termination (SMA) .....	11	
<i>Abmessungen gerader Leiterplattenanschluss (SMA)</i> .....	<i>11</i>	
Dimensions Right Angled PCB Termination (SMA) .....	12	
<i>Abmessungen abgewinkelter Leiterplattenanschluss (SMA)</i> .....	<i>12</i>	
Dimensions Straight Flange Mounted, Semi-rigid (SMA) .....	12	
<i>Abmessungen gerade Flanschmontage, Semi-rigid (SMA)</i> .....	<i>12</i>	
Dimensions Straight Flange Mounted (SMA) .....	13	
<i>Abmessungen gerade Flanschmontage (SMA)</i> .....	<i>13</i>	
Dimensions Straight Surface Mounted/SMT (SMA) .....	13	
<i>Abmessungen gerade Oberflächenmontage/SMT (SMA)</i> .....	<i>13</i>	
Product Line (SMA) .....	14	
<i>Lieferübersicht (SMA)</i> .....	<i>14</i>	
<b>SMB Coaxial Connectors</b> .....	<b>15</b>	
<i>SMB Koaxialkontakte</i> .....	<i>15</i>	
Technical Data .....	15	
<i>Technische Daten</i> .....	<i>15</i>	
SMB Coaxial Connectors, Mating Area Dimensions .....	16	
<i>SMB Koaxialkontakte, Abmessungen Steckbereich</i> .....	<i>16</i>	
Dimensions Straight Cable Termination (SMB) .....	16	
<i>Abmessungen gerader Kabelanschluss (SMB)</i> .....	<i>16</i>	
Dimensions Straight Cable Termination, Bulkhead (SMB) .....	17	
<i>Abmessungen gerader Kabelanschluss, Gehäusedurchführung (SMB)</i> .....	<i>17</i>	

# List of Contents

## Inhaltsverzeichnis

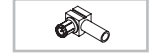
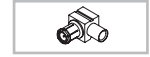
Dimensions Right Angled Cable Termination (SMB) .....	17
<i>Abmessungen abgewinkelter Kabelanschluss (SMB)</i> .....	17
Dimensions Straight PCB Termination (SMB) .....	17
<i>Abmessungen gerader Leiterplattenanschluss (SMB)</i> .....	17
Dimensions Right Angled PCB Termination (SMB) .....	18
<i>Abmessungen abgewinkelter Leiterplattenanschluss (SMB)</i> .....	18
Product Line (SMB) .....	18
<i>Lieferübersicht (SMB)</i> .....	18



### MCX Miniature Coaxial Connectors..... 19

#### *MCX Miniaturkoaxialkontakte*..... 19

Technical Data .....	19
<i>Technische Daten</i> .....	19
MCX Coaxial Connectors, Mating Area Dimensions .....	20
<i>MCX Koaxialkontakte, Abmessungen Steckbereich</i> .....	20
Dimensions Straight Cable Termination, Semi-rigid (MCX) .....	20
<i>Abmessungen gerader Kabelanschluss, semi-rigid (MCX)</i> .....	20
Dimensions Straight Cable Termination (MCX) .....	21
<i>Abmessungen gerader Kabelanschluss (MCX)</i> .....	21
Dimensions Straight Cable Termination, Semi-rigid, Bulkhead (MCX) .....	21
<i>Abmessungen gerader Kabelanschluss, semi-rigid, Gehäusedurchführung (MCX)</i> .....	21
Dimensions Straight Cable Termination, Bulkhead (MCX) .....	21
<i>Abmessungen gerader Kabelanschluss, Gehäusedurchführung (MCX)</i> .....	21
Dimensions Right Angled Cable Termination, Semi-rigid (MCX) .....	22
<i>Abmessungen abgewinkelter Kabelanschluss, semi-rigid (MCX)</i> .....	22
Dimensions Right Angled Cable Termination (MCX) .....	22
<i>Abmessungen abgewinkelter Kabelanschluss (MCX)</i> .....	22
Dimensions Straight PCB Termination (MCX) .....	22
<i>Abmessungen gerader Leiterplattenanschluss (MCX)</i> .....	22
Dimensions Straight PCB Termination, Surface Mounted/SMT (MCX) .....	22
<i>Abmessungen gerader Leiterplattenanschluss, Oberflächenmontage/SMT (MCX)</i> .....	22
Dimensions Right Angled PCB Termination (MCX) .....	23
<i>Abmessungen abgewinkelter Leiterplattenanschluss (MCX)</i> .....	23
Dimensions Straight Edge Mounted (MCX) .....	23
<i>Abmessungen Leiterplatten Kantenmontage, gerade (MCX)</i> .....	23
Product Line (MCX) .....	24
<i>Lieferübersicht (MCX)</i> .....	24



### MMCX Microminiature Coaxial Connectors ..... 25



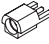
#### *MMCX Mikrominiaturkoaxialkontakte*..... 25

Technical Data .....	25
<i>Technische Daten</i> .....	25
MMCX Coaxial Connectors, Mating Area Dimensions .....	26
<i>MMCX Koaxialkontakte, Abmessungen Steckbereich</i> .....	26
Dimensions Straight Cable Termination, Semi-rigid (MMCX) .....	26
<i>Abmessungen gerader Kabelanschluss, semi-rigid (MMCX)</i> .....	26
Dimensions Straight Cable Termination (MMCX) .....	26
<i>Abmessungen gerader Kabelanschluss (MMCX)</i> .....	26
Dimensions Right Angled Cable Termination, Semi-rigid (MMCX) .....	27
<i>Abmessungen abgewinkelter Kabelanschluss, semi-rigid (MMCX)</i> .....	27
Dimensions Right Angled Cable Termination (MMCX) .....	27
<i>Abmessungen abgewinkelter Kabelanschluss (MMCX)</i> .....	27



# List of Contents

## Inhaltsverzeichnis

Dimensions Straight PCB Termination (MMCX).....	27	
<i>Abmessungen gerader Leiterplattenanschluss (MMCX).....</i>	<i>27</i>	
Dimensions Right Angled PCB Termination (MMCX).....	28	
<i>Abmessungen abgewinkelter Leiterplattenanschluss (MMCX).....</i>	<i>28</i>	
Dimensions Straight Edge Mounted (MMCX).....	28	
<i>Abmessungen Leiterplatten Kantenmontage, gerade (MMCX).....</i>	<i>28</i>	
Product Line (MMCX).....	28	
<i>Lieferübersicht (MMCX).....</i>	<i>28</i>	

### F Coaxial Connectors..... 29

#### *F Koaxialkontakte ..... 29*

Technical Data.....	29	
<i>Technische Daten.....</i>	<i>29</i>	
Dimensions Straight Cable Termination, Bulkhead (F).....	30	
<i>Abmessungen gerader Kabelanschluss, Gehäusedurchführung (F).....</i>	<i>30</i>	
Dimensions Right Angled PCB Termination (F).....	30	
<i>Abmessungen abgewinkelter Leiterplattenanschluss (F).....</i>	<i>30</i>	
Product Line (F).....	30	
<i>Lieferübersicht (F).....</i>	<i>30</i>	

### Order Number Index..... 31

#### *Bestellnummernindex ..... 31*



# General Information

## Allgemeine Informationen

### General Connector Characteristics

#### Allgemeine Merkmale der Kontakte

##### General Characteristics SMA Connectors

###### Allgemeine Merkmale SMA Kontakte

SMA coaxial connectors offer rugged mechanical performance with thread lock in precision design for the frequency range direct current (DC) to 12.4 GHz. By using semi-rigid cable this range can be increased to 18GHz. SMA connectors are available in various assembly, material and cable termination types.

*SMA Koaxialkontakte bieten eine dauerhafte mechanische Ausführung mit Gewindeverschluss in Präzisionsausführung für Gleichspannung (DC) bis 12,4 GHz. Bei der Verwendung von Semi-Rigid Kabeln erhöht sich der Frequenzbereich auf 18 GHz. SMA Kontakte sind in unterschiedlichsten Montage-, Material- und Kabelanschlussarten lieferbar.*

##### General Characteristics SMB Connectors

###### Allgemeine Merkmale SMB Kontakte

SMB coaxial connectors provide a repeatable electrical performance up to a frequency of 4GHz. The compact design and "snap-on" lock are an ideal solution for all applications where high density, ease of connect / disconnect, and economy are prerequisites. The SMB connectors are available in various assembly, material and cable termination types.

*SMB Koaxialkontakte bieten eine wiederholbare elektrische Performance bis zu einer Frequenz von 4GHz. Die kompakte Bauweise und der Schnappverschluss sind eine ideale Lösung für alle Anwendungen bei denen eine hohe Packungsdichte, ein einfaches Stecken und Lösen der Verbindung und Wirtschaftlichkeit gefordert wird. SMB Kontakte sind in unterschiedlichsten Montage-, Material- und Kabelanschlussarten lieferbar.*

##### General Characteristics MCX and MMCX Connectors

###### Allgemeine Merkmale MCX und MMCX Kontakte

MCX and MMCX miniature and microminiature connectors provide a repeatable performance from DC to 6GHz. Due to a 30% space reduction (MCX) from the SMB and 35% (MMCX) from the MCX, these connectors are ideal for GPS, wireless communications (WLAN and mobile) and automotive applications. The "snap-on" connection feature offers the user ease of assembly in dense packaging arrangements.

*MCX und MMCX Miniatur- und Microminiatur-Kontakte bieten eine wiederholbare elektrische Performance von DC bis 6 GHz. Durch eine Platzeinsparung von ca... 30% bei MCX gegenüber SMB- und 35% bei MMCX gegenüber MCX-Steckverbindern eignen sich diese besonders für Anwendungen im Bereich GPS, drahtloser Kommunikation (WLAN und Mobile) und Fahrzeugbau. Die Schnappverbindung bietet dem Anwender eine einfache Montage bei hoher Packungsdichte.*

##### General Characteristics F-Type Connectors

###### Allgemeine Merkmale F-Typ Kontakte

F-type coaxial connectors provide a low contact resistance and an extremely low VSWR, for the frequency range direct current (DC) to 3.0 GHz. The female F-type connectors are designed to accept mating conductors with 0.56 mm to 1.07 mm (.022" to .047") diameter or RG-6 and RG-59 male F-type connectors. Our superior "Flat nosed" F-type connectors are available in various assembly, material and cable termination types. All F-type connectors are SCTE specified.

*F-Typ Koaxialsteckverbinder bieten einen niedrigen Kontaktwiderstand und einen extrem niedrigen VSWR Wert für Gleichspannung (DC) bis 3 GHz. Die weiblichen Steckverbinder akzeptieren Innenleiter von Ø 0,56 bis Ø 1,07 mm und sind gegensteckbar mit männlichen RG-6 und RG-59 F-Typ Steckverbindern. Unsere anspruchsvollen „Flat nosed“ F-Typ Koaxialsteckverbinder sind in den unterschiedlichsten Montage-, Material- und Kabelanschlussarten lieferbar. Alle F-Typ Steckverbinder sind SCTE spezifiziert.*



## Identification of Platings in the Part Number

### *Kennzeichnung der Oberflächenbeschichtung in der Teilenummer*

Identification plating number <i>Kennzeichnung der Oberflächenbezeichnung</i>				
Part material <i>Grundmaterial</i>	Plating number <i>Oberflächenkennzeichen</i>	Plating material bodies <i>Oberflächenmaterial Außenleiter</i>	Bodies <i>Außenleiter</i>	Contact <i>Innenleiter</i>
Brass <i>Messing</i>	G	Gold	G3	G1
	N	Nickel	N1	G1
Stainless steel <i>Rostfreier Stahl</i>	G	Gold	G3	G1
	P	Passivated <i>Passiviertes Grundkörpermaterial</i>	P1	G1

Plating thickness <i>Beschichtungsstärken</i>	
Suffix <i>Kennzeichnung</i>	Thickness <i>Schichtstärke</i>
G1	≈30 microinches Au / ≈0,8μm Au
G3	≈15 microinches Au / ≈0,4μm Au
N1	≈100 microinches Ni / ≈3μm Ni
P1	Passivated / <i>Passiviert</i>

## Identification of Contact Type in the Part Number

### *Kennzeichnung der Kontaktart in der Teilenummer*

Part Number <i>Teilenummer</i>	Contact Type <i>Kontaktart</i>
AxxP...	Pin <i>Stiftkontakt</i>
AxxJ...	Jack <i>Buchsenkontakt</i>

## Termination

### *Anschlussart*

Bodies <i>Außenleiter</i>	Contact <i>Innenleiter</i>
Solder or crimp termination <i>Löten oder Crimpen</i>	Solder or crimp termination <i>Löten oder Crimpen</i>

# SMA Coaxial Connectors

## SMA Koaxialkontakte

### Technical Data

#### Technische Daten

##### Mechanical Data

##### Mechanische Daten

Mechanical Data <i>Mechanische Daten</i>	
Engagement torque <i>Verbindungs Drehmoment</i>	max. 22.6 Ncm (2 inch-pounds)
Mating torque <i>Anzugsdrehmoment</i>	79 Ncm to 113 Ncm (7 to 10 inch-pounds) <i>79 Ncm bis 113 Ncm</i>
Coupling nut retention <i>Überwurfmutter Haltekraft</i>	≤ 267 N (≤ 60 lbs.)
Mating cycles <i>Steckzyklen</i>	≥ 500
Recommended temperature range <i>Empfohlener Temperaturbereich</i>	-65 °C ≤ $\vartheta$ ≤ 165 °C (-85 °F ≤ $\vartheta$ ≤ 329 °F)

##### Electrical Data

##### Elektrische Daten

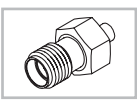
Electrical Data <i>Elektrische Daten</i>	
Characteristic impedance <i>Wellenwiderstand</i>	50 Ω
Frequency range <i>Frequenzbereich</i>	0 - 18 GHz
Insulation resistance <i>Isolationswiderstand</i>	≥ 5000 MΩ
Contact resistance inner conductor <i>Durchgangswiderstand Innenleiter</i>	≤ 3 mΩ
Contact resistance outer conductor <i>Durchgangswiderstand Außenleiter</i>	≤ 2 mΩ
Dielectric withstanding voltage (DWV) at sea level <i>Prüfspannung (DWV) auf Meereshöhe</i>	≥ 1500 VRMS

##### Materials and Platings

##### Materialien und Oberflächen

Materials and Platings <i>Materialien und Oberflächen</i>	
Body material <i>Kontaktmaterial</i>	Brass / Stainless steel <i>Messing / Rostfreier Stahl</i>
Material center conductor <i>Material Innenleiter</i>	CuBe / Brass <i>CuBe / Messing</i>
Insulator <i>Isolator</i>	Teflon <i>Teflon</i>
Crimp ferrule <i>Crimphülse</i>	Cu alloy <i>Cu Legierung</i>
Gasket <i>Dichtring</i>	Silicone rubber <i>Silicon Gummi</i>
Center contact plating <i>Oberfläche Innenleiter</i>	Au over Ni <i>Au über Ni</i>



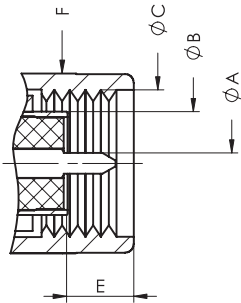


# SMA Coaxial Connectors, Mating Area Dimensions

## SMA Koaxialkontakte, Abmessungen Steckbereich

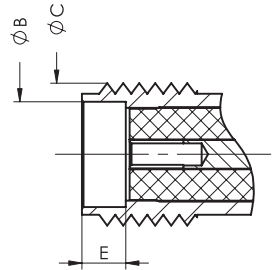
Plug

Stift



Jack

Buchse

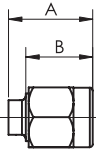


	Plug / Stift		Jack / Buchse	
	min.	max.	min.	max.
A	0,90 (0.035)	0,94 (0.037)	—	—
B	—	4,59 (0.181)	4,60 (0.181)	4,67 (0.184)
C	1/4-36 UNS-2B		1/4-36 UNS-2A	
D	3,43 (0.135)	—	1,88 (0.074)	1,98 (0.078)
E	SW 8 Hex 5/16"		—	—

# Dimensions Straight Cable Termination, Semi-rigid (SMA)

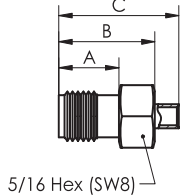
## Abmessungen gerader Kabelanschluss, semi-rigid (SMA)

Plug  
Stift



FCT Part Number FCT Teilenummer	A	B	C	Material Material	Suitable Cable Verwendbares Kabel
A23P1NA-103-10	11,6 (0.455)	9,3 (0.365)	—	Stainless steel Rostfreier Stahl	0.086 Semi-rigid
A23P1NA-104-10	11,1 (0.436)	8,8 (0.348)	—		0.141 Semi-rigid
A23P1NA-104-11	11,1 (0.436)	8,8 (0.348)	—		0.141 Semi-rigid
A23P1NA-111-10	11,6 (0.456)	9,3 (0.365)	—	Brass Messing	0.047 Semi-rigid
A24P1NA-103-10	11,6 (0.455)	9,3 (0.365)	—		0.086 Semi-rigid
A24P1NA-104-10	11,1 (0.436)	8,8 (0.348)	—		0.141 Semi-rigid
A24P1NA-104-11	11,1 (0.436)	8,8 (0.348)	—		0.141 Semi-rigid
A24P1NA-111-10	11,6 (0.455)	9,3 (0.365)	—	0.047 Semi-rigid	
A23J1NA-103-10	7,9 (0.312)	12,7 (0.500)	15,9 (0.625)	Brass Messing	0.086 Semi-rigid
A23J1NA-104-10	7,9 (0.312)	12,7 (0.500)	15,9 (0.625)		0.141 Semi-rigid
A23J1NA-111-10	7,9 (0.312)	12,7 (0.500)	15,9 (0.625)		0.047 Semi-rigid
A24J1NA-103-10	7,9 (0.312)	12,7 (0.500)	15,9 (0.625)	Brass Messing	0.086 Semi-rigid
A24J1NA-104-10	7,9 (0.312)	12,7 (0.500)	15,9 (0.625)		0.141 Semi-rigid
A24J1NA-111-10	7,9 (0.312)	12,7 (0.500)	15,9 (0.625)		0.047 Semi-rigid

Jack  
Buchse

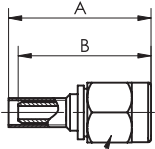




## Dimensions Straight Cable Termination (SMA)

### Abmessungen gerader Kabelanschluss (SMA)

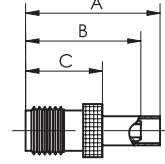
Plug  
Stift



5/16 Hex (SW8)

FCT Part Number FCT Teilenummer	A	B	C	Material Material	Suitable Cable Verwendbares Kabel
A23P1NA-201-10	18,9 (0.743)	17,6 (0.693)	—	Stainless steel Rostfreier Stahl	RG316, 188, 174
A23P1NA-205-10	18,9 (0.743)	17,6 (0.693)	—		RG316, 188, 174 D.S.
A23P1NA-209-10	26,4 (1.041)	20,1 (0.791)	—		RG58, 141, 303, LMR 195
A23P1NA-210-10	26,4 (1.041)	20,1 (0.791)	—		RG55, 142, 223, 400
A24P1NA-201-10	18,9 (0.743)	17,6 (0.693)	—	Brass Messing	RG316, 188, 174
A24P1NA-205-10	18,9 (0.743)	17,6 (0.693)	—		RG316, 188, 174 D.S.
A24P1NA-209-10	26,4 (1.041)	20,1 (0.791)	—		RG58, 141, 303, LMR 195
A24P1NA-210-10	26,4 (1.041)	20,1 (0.791)	—		RG55, 142, 223, 400
A23J1NA-201-10	20,1 (0.792)	16,0 (0.630)	9,2 (0.362)	Stainless steel Rostfreier Stahl	RG316, 188, 174
A23J1NA-205-10	20,1 (0.792)	16,0 (0.630)	9,2 (0.362)		RG316, 188, 174 D.S.
A23J1NA-209-10	21,6 (0.851)	17,5 (0.689)	10,7 (0.421)		RG58, 141, 303, LMR 195
A23J1NA-210-10	21,6 (0.851)	17,5 (0.689)	10,7 (0.421)		RG55, 142, 223, 400
A24J1NA-201-10	20,1 (0.792)	16,0 (0.630)	9,2 (0.362)	Brass Messing	RG316, 188, 174
A24J1NA-205-10	20,1 (0.792)	16,0 (0.630)	9,2 (0.362)		RG316, 188, 174 D.S.
A24J1NA-209-10	21,6 (0.851)	17,5 (0.689)	10,7 (0.421)		RG58, 141, 303, LMR 195
A24J1NA-210-10	21,6 (0.851)	17,5 (0.689)	10,7 (0.421)		RG55, 142, 223, 400

Jack  
Buchse

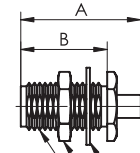
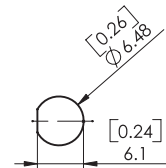


## Dimensions Straight Cable Termination, Semi-rigid, Bulkhead (SMA)

### Abmessungen gerader Kabelanschluss, semi-rigid, Gehäusedurchführung (SMA)

FCT Part Number FCT Teilenummer	A	B	Material Material	Suitable Cable Verwendbares Kabel
A23J1BK-103-10	15,9 (0.625)	11,4 (0.450)	Stainless steel Rostfreier Stahl	0.086 Semi-rigid
A23J1BK-104-10	17,4 (0.684)	11,4 (0.450)		0.141 Semi-rigid
A23J1BK-111-10	15,9 (0.625)	11,4 (0.450)		0.047 Semi-rigid
A24J1BK-103-10	15,9 (0.625)	11,4 (0.450)	Brass Messing	0.086 Semi-rigid
A24J1BK-104-10	17,4 (0.684)	11,4 (0.450)		0.141 Semi-rigid
A24J1BK-111-10	15,9 (0.625)	11,4 (0.450)		0.047 Semi-rigid

Jack  
Buchse



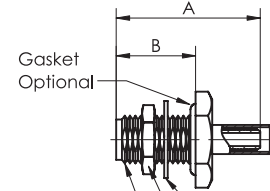
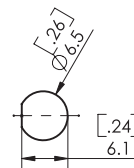
Lockwasher  
5/16 Hex Nut (SW8)  
1/4-36 UNEF-2A

## Dimensions Straight Cable Termination, Bulkhead (SMA)

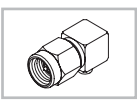
### Abmessungen gerader Kabelanschluss, Gehäusedurchführung (SMA)

FCT Part Number FCT Teilenummer	A	B	Material Material	Suitable Cable Verwendbares Kabel
A23J1BK-201-10	19,1 (0.750)	10,4 (0.410)	Stainless steel Rostfreier Stahl	RG316, 188, 174
A23J1BK-205-10	19,1 (0.750)	10,4 (0.410)		RG316, 188, 174 D.S.
A23J1BK-209-10	19,1 (0.750)	10,4 (0.410)		RG58, 141, 303, LMR 195
A23J1BK-210-10	19,1 (0.750)	10,4 (0.410)		RG55, 142, 223, 400
A24J1BK-201-10	19,1 (0.750)	10,4 (0.410)	Brass Messing	RG316, 188, 174
A24J1BK-205-10	19,1 (0.750)	10,4 (0.410)		RG316, 188, 174 D.S.
A24J1BK-209-10	19,1 (0.750)	10,4 (0.410)		RG58, 141, 303, LMR 195
A24J1BK-210-10	19,1 (0.750)	10,4 (0.410)		RG55, 142, 223, 400

Jack  
Buchse

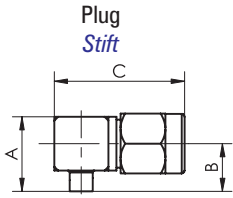


LOCKWASHER  
[.312] 7.93 HEX NUT  
1/4-36 UNEF-2A



## Dimensions Right Angled Cable Termination, Semi-rigid (SMA)

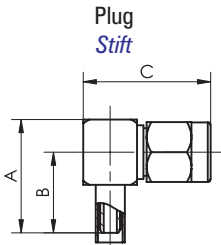
### Abmessungen abgewinkelter Kabelanschluss, semi-rigid (SMA)



FCT Part Number FCT Teilenummer	A	B	C	Material Material	Suitable Cable Verwendbares Kabel
A23P2NA-103-10	11,5 (0.451)	7,9 (0.311)	17,2 (0.678)	Stainless steel Rostfreier Stahl	0.086 Semi-rigid
A23P2NA-104-10	11,5 (0.451)	7,9 (0.311)	17,2 (0.678)		0.141 Semi-rigid
A23P2NA-111-10	11,5 (0.451)	7,9 (0.311)	17,2 (0.678)		0.047 Semi-rigid
A24P2NA-103-10	11,5 (0.451)	7,9 (0.311)	17,2 (0.678)	Brass Messing	0.086 Semi-rigid
A24P2NA-104-10	11,5 (0.451)	7,9 (0.311)	17,2 (0.678)		0.141 Semi-rigid
A24P2NA-111-10	11,5 (0.451)	7,9 (0.311)	17,2 (0.678)		0.047 Semi-rigid

## Dimensions Right Angled Cable Termination (SMA)

### Abmessungen abgewinkelter Kabelanschluss (SMA)

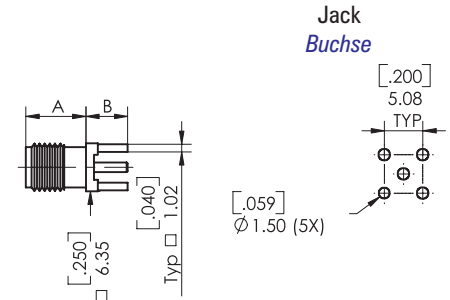


FCT Part Number FCT Teilenummer	A	B	C	Material Material	Suitable Cable Verwendbares Kabel
A23P2NA-201-10	15,0 (0.591)	10,7 (0.421)	16,9 (0.664)	Stainless Steel Rostfreier Stahl	RG316, 188, 174
A23P2NA-205-10	15,0 (0.591)	10,7 (0.421)	16,9 (0.664)		RD316, 188, 174, D.S.
A23P2NA-209-10	15,0 (0.591)	10,7 (0.421)	16,9 (0.664)		RG58, 141, 303, LMR 195
A23P2NA-210-10	15,0 (0.591)	10,7 (0.421)	16,9 (0.664)		RG55, 142, 223, 400
A24P2NA-201-10	15,0 (0.591)	10,7 (0.421)	16,9 (0.664)	Brass Messing	RG316, 188, 174
A24P2NA-205-10	15,0 (0.591)	10,7 (0.421)	16,9 (0.664)		RD316, 188, 174
A24P2NA-209-10	15,0 (0.591)	10,7 (0.421)	16,9 (0.664)		RG58, 141, 303, LMR 195
A24P2NA-210-10	15,0 (0.591)	10,7 (0.421)	16,9 (0.664)		RG55, 142, 223, 400

## Dimensions Straight PCB Termination (SMA)

### Abmessungen gerader Leiterplattenanschluss (SMA)

FCT Part Number FCT Teilenummer	A	B	Material Material
A23J1PC-000-10	9,5 (0.375)	3,9 (0.155)	Stainless Steel Rostfreier Stahl
A24J1PC-000-10	9,5 (0.375)	3,9 (0.155)	Brass Messing

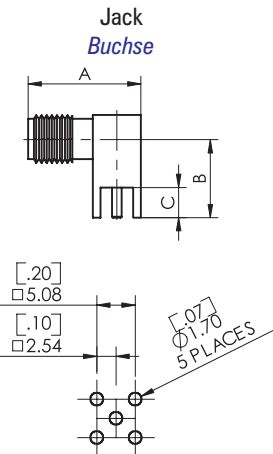




## Dimensions Right Angled PCB Termination (SMA)

### Abmessungen abgewinkelter Leiterplattenanschluss (SMA)

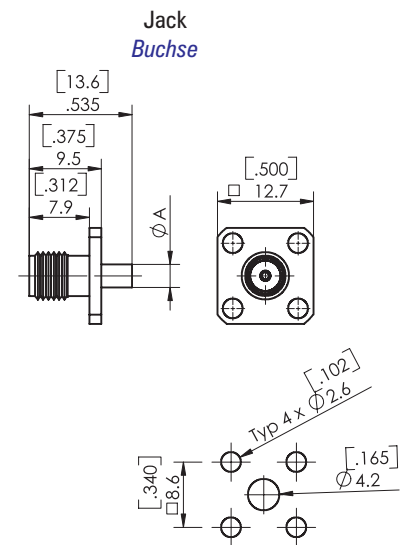
FCT Part Number FCT Teilenummer	A	B	C	Material Material
A23J2PC-000-10	14,9 (0.587)	10,4 (0.409)	3,9 (0.155)	Stainless Steel Rostfreier Stahl
A24J2PC-000-10	14,9 (0.587)	10,4 (0.409)	3,9 (0.155)	Brass Messing



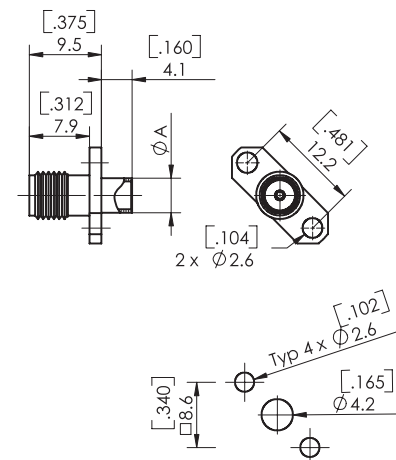
## Dimensions Straight Flange Mounted, Semi-rigid (SMA)

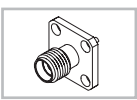
### Abmessungen gerade Flanschmontage, Semi-rigid (SMA)

FCT Part Number FCT Teilenummer	A	Material Material	Suitable Cable Verwendbares Kabel
A24J1FL-103-10	3,1 (0.120)	Brass Messing	0.086 Semi-rigid
A24J1FL-104-10	4,6 (0.180)		0.141 Semi-rigid



FCT Part Number FCT Teilenummer	A	Material Material	Suitable Cable Verwendbares Kabel
A24J1FL-103-11	3,1 (0.120)	Brass Messing	0.086 Semi-rigid
A24J1FL-104-11	3,1 (0.120)		0.141 Semi-rigid



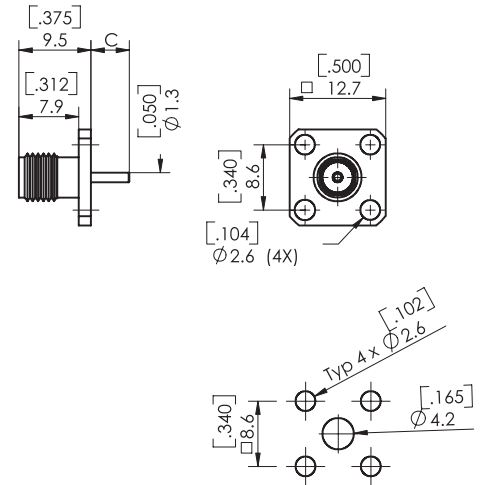


# Dimensions Straight Flange Mounted (SMA)

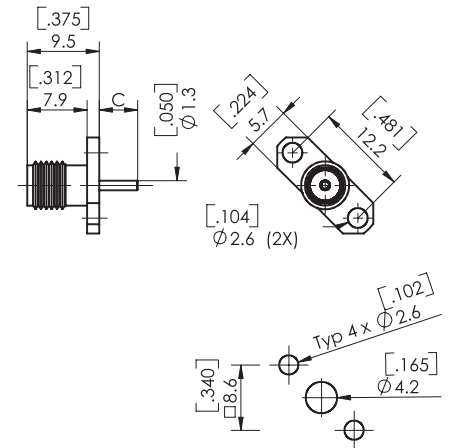
## Abmessungen gerade Flanschmontage (SMA)

FCT part number <i>FCT Teilenummer</i>	C	Material <i>Material</i>	Miscellaneous <i>Sonstiges</i>
A23J1FL-000-10	6,0 (0.236)	Stainless steel <i>Rostfreier Stahl</i>	Extended Dielectric
A24J1FL-000-17	5,1 (0.200)	Brass <i>Messing</i>	überstehendes Dielektrikum

Jack  
Buchse



FCT part number <i>FCT Teilenummer</i>	C	Material <i>Material</i>
A24J1FL-000-18	5,1 (0.200)	Brass <i>Messing</i>

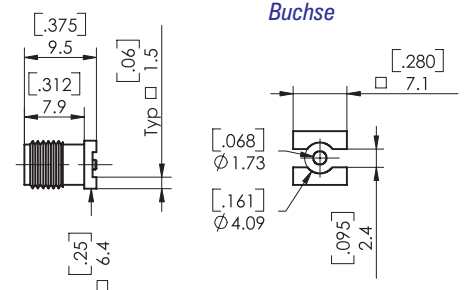


# Dimensions Straight Surface Mounted/SMT (SMA)

## Abmessungen gerade Oberflächenmontage/SMT (SMA)

FCT Part Number <i>FCT Teilenummer</i>	Material <i>Material</i>
A24J1SF-000-10	Brass <i>Messing</i>

Jack  
Buchse



# Product Line (SMA)

## Lieferübersicht (SMA)

FCT Part Number <i>FCT Teilenummer</i>	Characteristic Impedance <i>Wellenwiderstand</i>	Material <i>Material</i>	Inner Conductor <i>Innenleiter</i>	Suitable Cable <i>Verwendbares Kabel</i>	Mounting <i>Befestigung</i>		
<b>Straight Cable Termination / Gerader Kabelanschluss</b>							
A23P1NA-103-10	50 Ohm	Stainless steel <i>Rostfreier Stahl</i>	Plug <i>Stift</i>	0.086 Semi-rigid			
A23P1NA-104-10				0.141 Semi-rigid			
A23P1NA-104-11				0.141 Semi-rigid	Unassembled / <i>Nicht montiert</i>		
A23P1NA-111-10				0.047 Semi-rigid			
A23P1NA-201-10				RG316, 188, 174			
A23P1NA-205-10				RG316, 188, 174 D.S.			
A23P1NA-209-10				RG58, 141, 303, LMR 195			
A23P1NA-210-10				RG55, 142, 223, 400			
A23J1BK-103-10				0.086 Semi-rigid	Bulkhead / <i>Gehäusedurchführung</i>		
A23J1BK-104-10				0.141 Semi-rigid	Bulkhead / <i>Gehäusedurchführung</i>		
A23J1BK-111-10				0.047 Semi-rigid	Bulkhead / <i>Gehäusedurchführung</i>		
A23J1BK-201-10				RG316, 188, 174	Bulkhead / <i>Gehäusedurchführung</i>		
A23J1BK-205-10			RG316, 188, 174 D.S.	Bulkhead / <i>Gehäusedurchführung</i>			
A23J1BK-209-10			RG58, 141, 303, LMR 195	Bulkhead / <i>Gehäusedurchführung</i>			
A23J1BK-210-10			RG55, 142, 223, 400				
A23J1NA-103-10			0.086 Semi-rigid				
A23J1NA-104-10			0.141 Semi-rigid				
A23J1NA-111-10			0.047 Semi-rigid				
A23J1NA-201-10			RG316, 188, 174				
A23J1NA-205-10			RG316, 188, 174 D.S.				
A23J1NA-209-10			RG58, 141, 303, LMR 195				
A23J1NA-210-10			RG55, 142, 223, 400				
A24P1NA-103-10			50 Ohm	Brass <i>Messing</i>	Plug <i>Stift</i>	0.086 Semi-rigid	
A24P1NA-104-10						0.141 Semi-rigid	
A24P1NA-104-11	0.141 Semi-rigid	Unassembled / <i>Nicht montiert</i>					
A24P1NA-111-10	0.047 Semi-rigid						
A24P1NA-201-10	RG316, 188, 174						
A24P1NA-205-10	RG316, 188, 174 D.S.						
A24P1NA-209-10	RG58, 141, 303, LMR 195						
A24P1NA-210-10	RG55, 142, 223, 400						
A24J1BK-103-10	0.086 Semi-rigid	Bulkhead / <i>Gehäusedurchführung</i>					
A24J1BK-104-10	0.141 Semi-rigid	Bulkhead / <i>Gehäusedurchführung</i>					
A24J1BK-111-10	0.047 Semi-rigid	Bulkhead / <i>Gehäusedurchführung</i>					
A24J1BK-201-10	RG316, 188, 174	Bulkhead / <i>Gehäusedurchführung</i>					
A24J1BK-205-10	RG316, 188, 174 D.S.	Bulkhead / <i>Gehäusedurchführung</i>					
A24J1BK-209-10	RG58, 141, 303, LMR 195	Bulkhead / <i>Gehäusedurchführung</i>					
A24J1BK-210-10	RG55, 142, 223, 400						
A24J1NA-103-10	0.086 Semi-rigid						
A24J1NA-104-10	0.141 Semi-rigid						
A24J1NA-111-10	0.047 Semi-rigid						
A24J1NA-201-10	RG316, 188, 174						
A24J1NA-205-10	RG316, 188, 174 D.S.						
A24J1NA-209-10	RG58, 141, 303, LMR 195						
A24J1NA-210-10	RG55, 142, 223, 400						
<b>Right Angled Cable Termination / Abgewinkelter Kabelanschluss</b>							
A23P2NA-103-10	50 Ohm	Stainless steel <i>Rostfreier Stahl</i>			Plug <i>Stift</i>	0.086 Semi-rigid	
A23P2NA-104-10			0.141 Semi-rigid				
A23P2NA-111-10			0.047 Semi-rigid				
A23P2NA-201-10			RG316, 188, 174				
A23P2NA-205-10			RD316, 188, 174, D.S.				
A23P2NA-209-10			RG58, 141, 303, LMR 195				
A23P2NA-210-10			RG55, 142, 223, 400				
A24P2NA-103-10			0.086 Semi-rigid				
A24P2NA-104-10			0.141 Semi-rigid				
A24P2NA-111-10			0.047 Semi-rigid				
A24P2NA-201-10			RG316, 188, 174				
A24P2NA-205-10			RD316, 188, 174				
A24P2NA-209-10	RG58, 141, 303, LMR 195						
A24P2NA-210-10	RG55, 142, 223, 400						
<b>Straight PCB Termination / Gerader Leiterplattenanschluss</b>							
A23J1PC-000-10	50 Ohm	Stainless steel <i>Rostfreier Stahl</i>	Jack <i>Buchse</i>		PCB / <i>Leiterplatte</i>		
A24J1PC-000-10		Brass <i>Messing</i>					
<b>Right Angled PCB Termination / Abgewinkelter Leiterplattenanschluss /</b>							
A23J2PC-000-10	50 Ohm	Stainless steel <i>Rostfreier Stahl</i>	Jack <i>Buchse</i>		PCB / <i>Leiterplatte</i>		
A24J2PC-000-10		Brass <i>Messing</i>					
<b>Straight Flange Mounted, semi-rigid / Gerade Flanschmontage, Semi-rigid</b>							
A24J1FL-103-10	50 Ohm	Brass <i>Messing</i>	Jack <i>Buchse</i>	0.086 Semi-rigid	4 Hole Flange / <i>4 Lochflansch</i>		
A24J1FL-103-11				0.086 Semi-rigid	2 Hole Flange / <i>2 Lochflansch</i>		
A24J1FL-104-10				0.141 Semi-rigid	4 Hole Flange / <i>4 Lochflansch</i>		
A24J1FL-104-11				0.141 Semi-rigid	2 Hole Flange / <i>2 Lochflansch</i>		
<b>Straight Flange Mounted / Gerade Flanschmontage</b>							
A23J1FL-000-10	50 Ohm	Stainless steel <i>Rostfreier Stahl</i>	Jack <i>Buchse</i>		4 Hole Flange / <i>4 Lochflansch</i>		
A24J1FL-000-17		Brass <i>Messing</i>			4 Hole Flange / <i>4 Lochflansch</i>		
A24J1FL-000-11					2 Hole Flange / <i>2 Lochflansch</i>		
<b>Straight Surface Mounted (SMT) / Gerade Oberflächenmontage (SMT)</b>							
A24J1FL-000-11	50 Ohm	Brass / <i>Messing</i>	Jack / <i>Buchse</i>				

# SMB Coaxial Connectors

## SMB Koaxialkontakte

### Technical Data

#### Technische Daten

##### Mechanical Data

##### Mechanische Daten

Mechanical Data <i>Mechanische Daten</i>	
Mating force <i>Steckkraft</i>	max. 62.3 N (14 lbs.)
Unmating force <i>Ziehkraft</i>	$8,9 \text{ N} \leq F \leq 62.3 \text{ N}$ (2 lbs. $\leq F \leq 14 \text{ lbs.}$ )
Recommended temperature range <i>Empfohlener Temperaturbereich</i>	$-65 \text{ }^\circ\text{C} \leq \vartheta \leq 165 \text{ }^\circ\text{C}$ ( $-85 \text{ }^\circ\text{F} \leq \vartheta \leq 329 \text{ }^\circ\text{F}$ )
Mating cycles <i>Steckzyklen</i>	$\geq 500$

##### Electrical Data

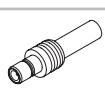
##### Elektrische Daten

Electrical Data <i>Elektrische Daten</i>	
Characteristic impedance <i>Wellenwiderstand</i>	50 $\Omega$ / 75 $\Omega$
Frequency range <i>Frequenzbereich</i>	0 - 4 GHz
Insulation resistance <i>Isolationswiderstand</i>	$\geq 1000 \text{ M}\Omega$
Contact resistance inner conductor <i>Durchgangswiderstand Innenleiter</i>	$\leq 6 \text{ m}\Omega$
Contact resistance outer conductor <i>Durchgangswiderstand Außenleiter</i>	$\leq 1 \text{ m}\Omega$
Dielectric Withstanding Voltage (DWV) at sea level <i>Prüfspannung (DWV) auf Meereshöhe</i>	$\geq 1000 \text{ VRSM}$

##### Materials and Platings

##### Materialien und Oberflächen

Materials and Platings <i>Materialien und Oberflächen</i>	
Body material <i>Kontaktmaterial</i>	Brass <i>Messing</i>
Material center conductor <i>Material Innenleiter</i>	CuBe / Brass <i>CuBe / Messing</i>
Insulator <i>Isolator</i>	Teflon <i>Teflon</i>
Crimp ferrule <i>Crimphülse</i>	Cu alloy <i>Cu Legierung</i>
Lockwasher <i>Sicherungsscheibe</i>	CuBe <i>CuBe</i>
Center contact plating <i>Oberfläche Innenleiter</i>	Au over Ni <i>Au über Ni</i>

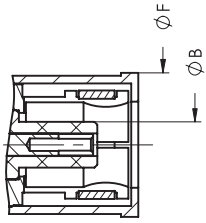


# SMB Coaxial Connectors, Mating Area Dimensions

## SMB Koaxialkontakte, Abmessungen Steckbereich

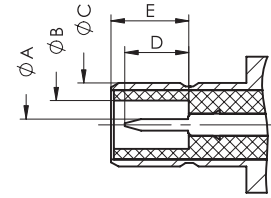
Plug

Stift



Jack

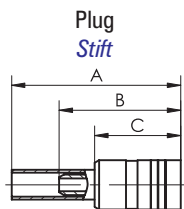
Buchse



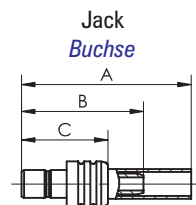
	Plug / <i>Stift</i>		Jack / <i>Buchse</i>	
	min.	max.	min.	max.
A	—	—	0,48 (0.019)	0,53 (0.021)
B	—	2,06 (0.081)	2,08 (0.082)	—
C	—	—	3,66 (0.144)	3,71 (0.146)
D	—	—	—	2,97 (0.117)
E	—	—	3,35 (0.132)	3,48 (0.137)
F	—	6,60 (0.260)	—	—

# Dimensions Straight Cable Termination (SMB)

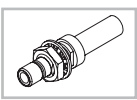
## Abmessungen gerader Kabelanschluss (SMB)



FCT Part Number <i>FCT Teilenummer</i>	A	B	C	Characteristic Impedance <i>Wellenwiderstand</i>	Suitable cable <i>Verwendbares Kabel</i>
A26J1NA-201-10	19,1 (0.750)	17,8 (0.700)	11,8 (0.463)	50 Ohm	RG316, 188, 174
A26J1NA-205-10	19,1 (0.750)	17,8 (0.700)	11,8 (0.463)		RG316, 188, 174 D.S.
A26P1NA-201-10	19,1 (0.750)	17,8 (0.700)	10,8 (0.425)		RG316, 188, 174
A26P1NA-205-10	19,1 (0.750)	17,8 (0.700)	10,8 (0.425)		RG316, 188, 174
A29J1NA-201-10	19,1 (0.750)	17,8 (0.700)	11,8 (0.463)	MINI / 75 Ohm	RG179, 187
A29J1NA-205-10	19,1 (0.750)	17,8 (0.700)	11,8 (0.463)		RG179, 187 D.S.
A29P1NA-201-10	19,1 (0.750)	17,8 (0.700)	10,8 (0.425)		RG179, 187
A29P1NA-205-10	19,1 (0.750)	17,8 (0.700)	10,8 (0.425)		RG179, 187 D.S.



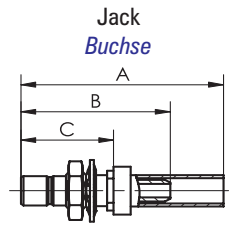




## Dimensions Straight Cable Termination, Bulkhead (SMB)

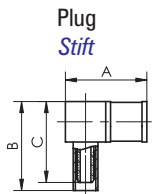
### Abmessungen gerader Kabelanschluss, Gehäusedurchführung (SMB)

FCT Part Number FCT Teilenummer	A	B	C	Characteristic Impedance Wellenwiderstand	Suitable Cable Verwendbares Kabel
A26J1BK-201-10	23,6 (0.928)	22,2 (0.875)	10,4 (0.410)	50 Ohm	RG316, 188, 174
A26J1BK-205-10	23,6 (0.928)	22,2 (0.875)	10,4 (0.410)		RG316, 188, 174, D.S.
A29J1BK-201-10	23,6 (0.928)	22,2 (0.875)	10,4 (0.410)	MINI / 75 Ohm	RG179, 187
A29J1BK-205-10	23,6 (0.928)	22,2 (0.875)	10,4 (0.410)		RG179, 187 D.S.



## Dimensions Right Angled Cable Termination (SMB)

### Abmessungen abgewinkelter Kabelanschluss (SMB)



FCT Part Number FCT Teilenummer	A	B	C	Characteristic Impedance Wellenwiderstand	Suitable Cable Verwendbares Kabel
A26P2NA-201-10	12,8 (0.505)	14,0 (0.550)	12,7 (0.500)	50 Ohm	RG316, 188, 174
A26P2NA-205-10	12,8 (0.505)	14,0 (0.550)	12,7 (0.500)		RG316, 188, 174 D.S.
A26P2NA-206-10	12,8 (0.505)	14,0 (0.550)	12,7 (0.500)		RG178, 196
A29P2NA-201-10	12,8 (0.505)	14,0 (0.550)	12,7 (0.500)	MINI / 75 Ohm	RG179, 187
A29P2NA-205-10	12,8 (0.505)	14,0 (0.550)	12,7 (0.500)		RG179, 187 D.S.

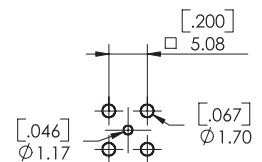
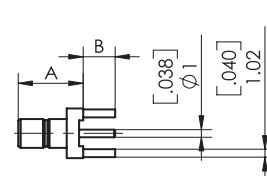
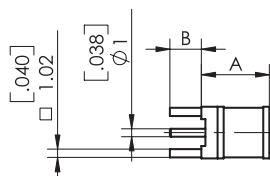
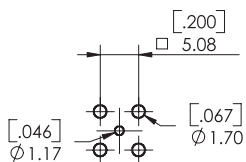
## Dimensions Straight PCB Termination (SMB)

### Abmessungen gerader Leiterplattenanschluss (SMB)

Plug  
Stift

FCT Part Number FCT Teilenummer	A	B	Characteristic Impedance Wellenwiderstand
A26P1PC-000-10	8,5 (0.335)	3,9 (0.155)	50 Ohm
A26P1SF-000-10	8,5 (0.335)	—	
A26J1PC-000-10	8,0 (0.315)	3,9 (0.155)	MINI / 75 Ohm
A26J1SF-000-10	8,0 (0.315)	—	
A29P1PC-000-10	8,5 (0.335)	3,9 (0.155)	MINI / 75 Ohm
A29P1SF-000-10	8,5 (0.335)	—	
A29J1PC-000-10	8,0 (0.315)	3,9 (0.155)	MINI / 75 Ohm
A29J1SF-000-10	8,0 (0.315)	—	

Jack  
Buchse

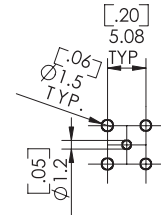
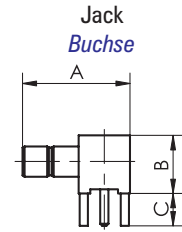




# Dimensions Right Angled PCB Termination (SMB)

## Abmessungen abgewinkelter Leiterplattenanschluss (SMB)

FCT Part Number <i>FCT Teilenummer</i>	A	B	C	Characteristic Impedance <i>Wellenwiderstand</i>
A26J2PC-000-10	13,3 (0.524)	7,1 (0.278)	3,9 (0.155)	50 Ohm
A29J2PC-000-10	13,3 (0.524)	7,1 (0.278)	3,9 (0.155)	MINI / 75 Ohm



# Product Line (SMB)

## Lieferübersicht (SMB)

FCT Part Number <i>FCT Teilenummer</i>	Characteristic Impedance <i>Wellenwiderstand</i>	Material <i>Material</i>	Inner conductor <i>Innenleiter</i>	Suitable cable <i>Verwendbares Kabel</i>	Mounting <i>Befestigung</i>
<b>Straight Cable Termination / Gerader Kabelanschluss</b>					
A26P1NA-201-10	50 Ohm	Brass <i>Messing</i>	Plug <i>Stift</i>	RG316, 188, 174	
A26P1NA-205-10				RG316, 188, 174 D.S.	
A26J1BK-201-10			Jack <i>Buchse</i>	RG316, 188, 174	Bulkhead / <i>Gehäusedurchführung</i>
A26J1BK-205-10				RG316, 188, 174, D.S.	Bulkhead / <i>Gehäusedurchführung</i>
A26J1NA-201-10				RG316, 188, 174	
A26J1NA-205-10			RG316, 188, 174 D.S.		
A29P1NA-201-10	MINI / 75 Ohm		Plug <i>Stift</i>	RG179, 187	
A29P1NA-205-10				RG179, 187 D.S.	
A29J1BK-201-10			Jack <i>Buchse</i>	RG179, 187	Bulkhead / <i>Gehäusedurchführung</i>
A29J1BK-205-10				RG179, 187 D.S.	Bulkhead / <i>Gehäusedurchführung</i>
A29J1NA-201-10			RG179, 187		
A29J1NA-205-10		RG179, 187 D.S.			
<b>Right Angled Cable Termination / Abgewinkelter Kabelanschluss</b>					
A26P2NA-201-10	50 Ohm	Brass <i>Messing</i>	Plug <i>Stift</i>	RG316, 188, 174	
A26P2NA-205-10				RG316, 188, 174 D.S.	
A26P2NA-206-10				RG178, 196	
A29P2NA-201-10	MINI / 75 Ohm		RG179, 187		
A29P2NA-205-10			RG179, 187 D.S.		
<b>Straight PCB Termination / Gerader Leiterplattenanschluss</b>					
A26P1PC-000-10	50 Ohm	Brass <i>Messing</i>	Plug <i>Stift</i>		PCB Mount / <i>Leiterplatte</i>
A26P1SF-000-10					Surface Mount / <i>Oberflächenmontage (SMT)</i>
A26J1PC-000-10			Jack <i>Buchse</i>		PCB Mount / <i>Leiterplatte</i>
A26J1SF-000-10					Surface Mount / <i>Oberflächenmontage (SMT)</i>
A29P1PC-000-10			MINI / 75 Ohm	Plug <i>Stift</i>	
A29P1SF-000-10					Surface Mount / <i>Oberflächenmontage (SMT)</i>
A29J1PC-000-10	Jack <i>Buchse</i>				PCB Mount / <i>Leiterplatte</i>
A29J1SF-000-10					Surface Mount / <i>Oberflächenmontage (SMT)</i>
A29J1SF-000-10					Surface Mount / <i>Oberflächenmontage (SMT)</i>
<b>Right Angled PCB Termination / Abgewinkelter Leiterplattenanschluss</b>					
A26J2PC-000-10	50 Ohm	Brass	Jack		PCB Mount / <i>Leiterplatte</i>
A29J2PC-000-10	MINI / 75 Ohm	<i>Messing</i>	<i>Buchse</i>		PCB Mount / <i>Leiterplatte</i>

# MCX Miniature Coaxial Connectors

## MCX Miniaturkoaxialkontakte

### Technical Data

#### Technische Daten

##### Mechanical Data

##### Mechanische Daten

Mechanical Data <i>Mechanische Daten</i>	
Mating force <i>Steckkraft</i>	max. 24.9 N (5.6 lbs.)
Unmating force <i>Ziehkraft</i>	min. 8 N (1.8 lbs.)
Recommended temperature range <i>Empfohlener Temperaturbereich</i>	$-65\text{ °C} \leq \vartheta \leq 165\text{ °C}$ ( $-85\text{ °F} \leq \vartheta \leq 329\text{ °F}$ )
Mating cycles <i>Steckzyklen</i>	$\geq 500$

##### Electrical Data

##### Elektrische Daten

Electrical Data <i>Elektrische Daten</i>	
Characteristic impedance <i>Wellenwiderstand</i>	50 $\Omega$ / 75 $\Omega$
Frequency range <i>Frequenzbereich</i>	0 - 6 GHz
Insulation resistance <i>Isolationswiderstand</i>	$\geq 5000\text{ M}\Omega$
Contact resistance inner conductor <i>Durchgangswiderstand Innenleiter</i>	$\leq 5\text{ m}\Omega$
Contact resistance outer conductor <i>Durchgangswiderstand Außenleiter</i>	$\leq 1\text{ m}\Omega$
Dielectric Withstanding Voltage (DWV) at sea level <i>Prüfspannung (DWV) auf Meereshöhe</i>	$\geq 1000\text{ VRSM}$

##### Materials and Platings

##### Materialien und Oberflächen

Materials and Platings <i>Materialien und Oberflächen</i>	
Body material <i>Kontaktmaterial</i>	Brass <i>Messing</i>
Material center conductor <i>Material Innenleiter</i>	CuBe / Brass <i>CuBe / Messing</i>
Insulator <i>Isolator</i>	Teflon <i>Teflon</i>
Crimp ferrule <i>Crimphülse</i>	Cu alloy <i>Cu Legierung</i>
Center contact plating <i>Oberfläche Innenleiter</i>	Au over Ni <i>Au über Ni</i>

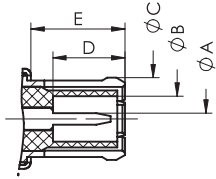


# MCX Coaxial Connectors, Mating Area Dimensions

## MCX Koaxialkontakte, Abmessungen Steckbereich

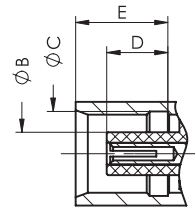
Plug

Stift



Jack

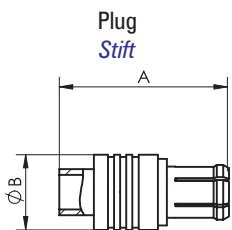
Buchse



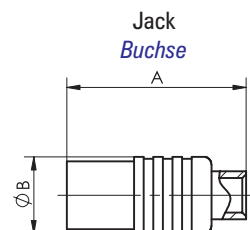
	Plug / <i>Stift</i>		Jack / <i>Buchse</i>	
	min.	max.	min.	max.
A	0,48 (0.019)	0,53 (0.021)	—	—
B	2,00 (0.079)	—	1,85 (0.073)	1,98 (0.078)
C	—	3,81 (0.150)	3,73 (0.147) <i>nom.</i>	
D	2,79 (0.110)	3,20 (0.126)	2,60 (0.102)	2,80 (0.110)
E	4,14 (0.163)	—	3,99 (0.157)	4,12 (0.162)

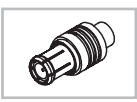
# Dimensions Straight Cable Termination, Semi-rigid (MCX)

## Abmessungen gerader Kabelanschluss, semi-rigid (MCX)



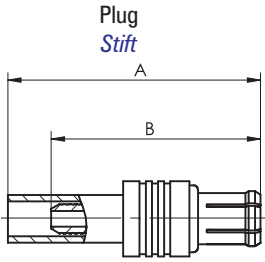
FCT Part Number <i>FCT Teilenummer</i>	A	B	Characteristic Impedance <i>Wellenwiderstand</i>	Suitable Cable <i>Verwendbares Kabel</i>
A25P1NA-103-10	11,2 (0.441)	5,0 (0.196)	50 Ohm	0.086 Semi-rigid
A25P1NA-104-10	13,8 (0.545)	5,0 (0.196)		0.141 Semi-rigid
A25P1NA-111-10	11,2 (0.441)	5,0 (0.196)		0.047 Semi-rigid
A25J1NA-103-10	11,9 (0.467)	5,0 (0.196)		.086 Semi-Rigid
A25J1NA-104-10	11,9 (0.467)	5,0 (0.196)		.141 Semi-rigid
A25J1NA-111-10	11,9 (0.467)	5,0 (0.196)		.047 Semi Rigid
A38P1NA-103-10	11,2 (0.441)	5,0 (0.196)	75 Ohm	RG405, .086 Semi-rigid
A38P1NA-104-10	13,8 (0.545)	5,0 (0.196)		0.141 Semi-rigid
A38J1NA-103-10	11,9 (0.467)	5,0 (0.196)		.086 Semi-Rigid
A38J1NA-104-10	11,9 (0.467)	5,0 (0.196)		.141 Semi-rigid



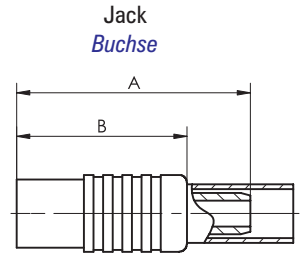


## Dimensions Straight Cable Termination (MCX)

### Abmessungen gerader Kabelanschluss (MCX)



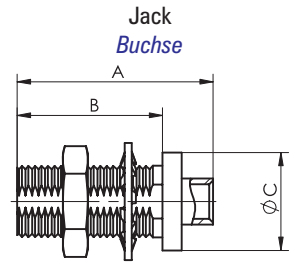
FCT Part Number FCT Teilenummer	A	B	Characteristic Impedance Wellenwiderstand	Suitable Cable Verwendbares Kabel
A25P1NA-201-10	15,7 (0.618)	13,7 (0.540)	50 Ohm	RG316, 188, 174
A25P1NA-205-10	15,7 (0.618)	13,7 (0.540)		RG316, 188, 174 D.S.
A25P1NA-206-10	15,7 (0.618)	13,7 (0.540)		RG178, 196
A25J1NA-201-10	12,6 (0.495)	10,6 (0.417)		RG316, 188, 174
A25J1NA-205-10	12,6 (0.495)	10,6 (0.417)		RG316, 188, 174 D.S.
A25J1NA-206-10	12,6 (0.495)	10,6 (0.417)		RG178, 196
A38P1NA-201-10	15,7 (0.618)	13,7 (0.540)	75 Ohm	RG179, 187
A38P1NA-205-10	15,7 (0.618)	13,7 (0.540)		RG179 D.S., 187
A38J1NA-201-10	12,6 (0.495)	10,6 (0.417)		RG179
A38J1NA-205-10	12,6 (0.495)	10,6 (0.417)		RG179 D.S., 187



## Dimensions Straight Cable Termination, Semi-rigid, Bulkhead (MCX)

### Abmessungen gerader Kabelanschluss, semi-rigid, Gehäusedurchführung (MCX)

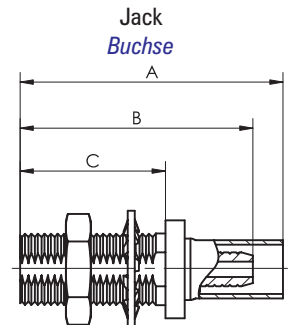
FCT Part Number FCT Teilenummer	A	B	C	Characteristic Impedance Wellenwiderstand	Suitable Cable Verwendbares Kabel
A25J1BK-103-10	14,3 (0.561)	9,6 (0.378)	6,5 (0.255)	50 Ohm	.086 Semi-Rigid
A25J1BK-104-10	14,3 (0.561)	9,6 (0.378)	6,5 (0.255)		.141 Semi-rigid
A25J1BK-111-10	14,3 (0.561)	9,6 (0.378)	6,5 (0.255)		.047 Semi Rigid
A38J1BK-103-10	14,3 (0.561)	9,6 (0.378)	6,5 (0.255)	75 Ohm	.086 Semi-Rigid
A38J1BK-104-10	14,3 (0.561)	9,6 (0.378)	6,5 (0.255)		.141 Semi-rigid

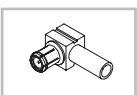


## Dimensions Straight Cable Termination, Bulkhead (MCX)

### Abmessungen gerader Kabelanschluss, Gehäusedurchführung (MCX)

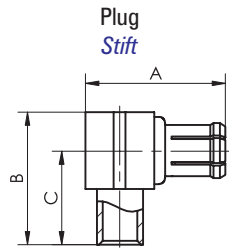
FCT Part Number FCT Teilenummer	A	B	C	Characteristic Impedance Wellenwiderstand	Suitable Cable Verwendbares Kabel
A25J1BK-201-10	19,2 (0.755)	15,4 (0.606)	8,0 (0.315)	50 Ohm	RG316, 188, 174
A25J1BK-205-10	19,2 (0.755)	15,4 (0.606)	8,0 (0.315)		RG316, 188, 174 D.S.
A25J1BK-206-10	19,2 (0.755)	15,4 (0.606)	8,0 (0.315)		RG178, 196
A38J1BK-201-10	19,2 (0.755)	15,4 (0.606)	8,0 (0.315)	75 Ohm	RG179, 187
A38J1BK-205-10	19,2 (0.755)	15,4 (0.606)	8,0 (0.315)		RG179 D.S., 187





## Dimensions Right Angled Cable Termination, Semi-rigid (MCX)

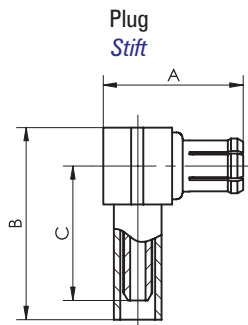
### Abmessungen abgewinkelter Kabelanschluss, semi-rigid (MCX)



FCT Part Number FCT Teilenummer	A	B	C	Characteristic Impedance Wellenwiderstand	Suitable Cable Verwendbares Kabel
A25P2NA-103-10	8,9 (0.349)	8,8 (0.345)	6,0 (0.236)	50 Ohm	.086 Semi-Rigid
A25P2NA-104-10	8,9 (0.349)	8,8 (0.345)	6,0 (0.236)		.141 Semi-Rigid
A25P2NA-111-10	8,9 (0.349)	8,8 (0.345)	6,0 (0.236)		.047 Semi-Rigid
A38P2NA-103-10	8,9 (0.349)	8,8 (0.345)	6,0 (0.236)	75 Ohm	.086 Semi-Rigid
A38P2NA-104-10	8,9 (0.349)	8,8 (0.345)	6,0 (0.236)		.141 Semi-Rigid

## Dimensions Right Angled Cable Termination (MCX)

### Abmessungen abgewinkelter Kabelanschluss (MCX)

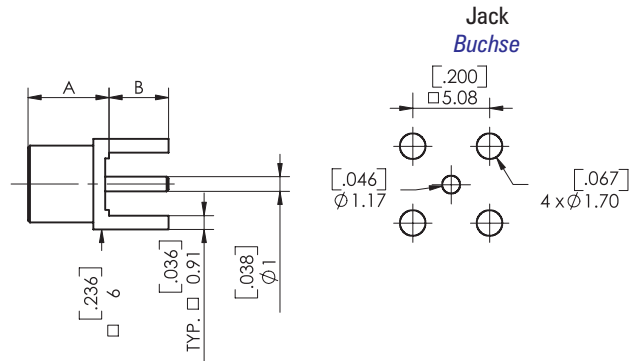


FCT Part Number FCT Teilenummer	A	B	C	Characteristic Impedance Wellenwiderstand	Suitable Cable Verwendbares Kabel
A25P2NA-201-10	8,9 (0.349)	13,2 (0.518)	9,1 (0.359)	50 Ohm	RG316, 188, 174
A25P2NA-205-10	8,9 (0.349)	13,2 (0.518)	9,1 (0.359)		RG316, 188, 174 D.S.
A25P2NA-206-10	8,9 (0.349)	13,2 (0.518)	9,1 (0.359)		RG178, 196
A38P2NA-201-10	8,9 (0.349)	13,2 (0.518)	9,1 (0.359)	75 Ohm	RG179, 187
A38P2NA-205-10	8,9 (0.349)	13,2 (0.518)	9,1 (0.359)		RG179 D.S., 187

## Dimensions Straight PCB Termination (MCX)

### Abmessungen gerader Leiterplattenanschluss (MCX)

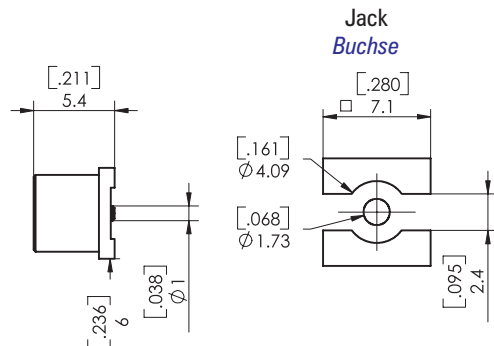
FCT Part Number FCT Teilenummer	A	B	Characteristic impedance Wellenwiderstand	Material Material
A25J1PC-000-10	6,0 (0.236)	3,9 (0.155)	50 Ohm	Brass Messing
A25J1PC-000-11	6,0 (0.236)	1,7 (0.068)		
A38J1PC-000-10	6,0 (0.236)	3,9 (0.155)	75 Ohm	
A38J1PC-000-11	6,0 (0.236)	1,7 (0.068)		

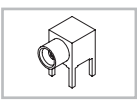


## Dimensions Straight PCB Termination, Surface Mounted/SMT (MCX)

### Abmessungen gerader Leiterplattenanschluss, Oberflächenmontage/SMT (MCX)

FCT Part Number FCT Teilenummer	Characteristic Impedance Wellenwiderstand	Material Material
A25J1SF-000-10G	50 Ohm	Brass Messing
A38J1SF-000-10G	75 Ohm	

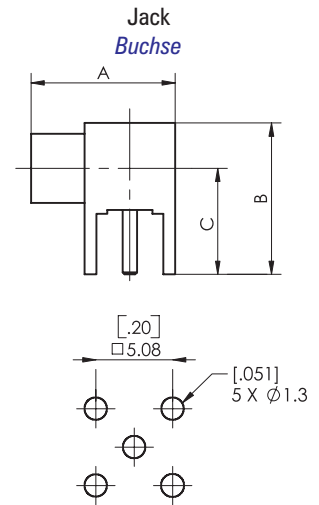




# Dimensions Right Angled PCB Termination (MCX)

## Abmessungen abgewinkelter Leiterplattenanschluss (MCX)

FCT Part Number <i>FCT Teilenummer</i>	A	B	C	Characteristic Impedance <i>Wellenwiderstand</i>	Material <i>Material</i>
A25J2PC-000-10	9,5 (0.375)	10,0 (0.394)	7,0 (0.276)	50 Ohm	Brass <i>Messing</i>
A38J2PC-000-10	9,5 (0.375)	10,0 (0.394)	7,0 (0.276)	75 Ohm	

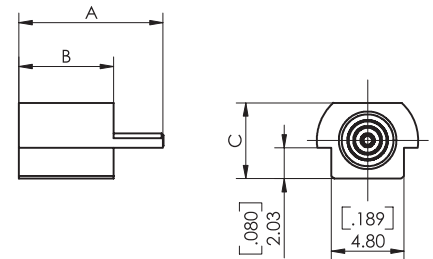


# Dimensions Straight Edge Mounted (MCX)

## Abmessungen Leiterplatten Kantenmontage, gerade (MCX)

FCT Part Number <i>FCT Teilenummer</i>	A	B	C	Characteristic Impedance <i>Wellenwiderstand</i>	Material <i>Material</i>
A25J1EG-000-10	9,6 (0.376)	6,3 (0.246)	5,0 (0.197)	50 Ohm	Brass <i>Messing</i>
A38J1EG-000-10	9,6 (0.376)	6,3 (0.246)	5,0 (0.197)	75 Ohm	

Jack  
Buchse



# Product Line (MCX)

## Lieferübersicht (MCX)

FCT Part Number <i>FCT Teilenummer</i>	Characteristic Impedance <i>Wellenwiderstand</i>	Material <i>Material</i>	Inner Conductor <i>Innenleiter</i>	Suitable Cable <i>Verwendbares Kabel</i>	Mounting <i>Befestigung</i>		
<b>Straight Cable Termination / Gerader Kabelanschluss</b>							
A25P1NA-103-10	50 Ohm	Brass <i>Messing</i>	Plug <i>Stift</i>	0.086 Semi-rigid			
A25P1NA-104-10				0.141 Semi-rigid			
A25P1NA-111-10				0.047 Semi-rigid			
A25P1NA-201-10				RG316, 188, 174	N/A		
A25P1NA-205-10				RG316, 188, 174 D.S.			
A25P1NA-206-10				RG178, 196			
A25J1BK-103-10				.086 Semi-Rigid	Bulkhead / <i>Gehäusedurchführung</i>		
A25J1BK-104-10				.141 Semi-rigid	Bulkhead / <i>Gehäusedurchführung</i>		
A25J1BK-111-10				.047 Semi Rigid	Bulkhead / <i>Gehäusedurchführung</i>		
A25J1BK-201-10				RG316, 188, 174	Bulkhead / <i>Gehäusedurchführung</i>		
A25J1BK-205-10			RG316, 188, 174 D.S.	Bulkhead / <i>Gehäusedurchführung</i>			
A25J1BK-206-10			RG178, 196	Bulkhead / <i>Gehäusedurchführung</i>			
A25J1NA-103-10			.086 Semi-Rigid				
A25J1NA-104-10			.141 Semi-rigid				
A25J1NA-111-10			.047 Semi Rigid				
A25J1NA-201-10			RG316, 188, 174				
A25J1NA-205-10			RG316, 188, 174 D.S.				
A25J1NA-206-10			RG178, 196				
<b>Right Angled Cable Termination / Abgewinkelter Kabelanschluss</b>							
A38P1NA-103-10			75 Ohm		Plug <i>Stift</i>	.086 Semi-rigid	
A38P1NA-104-10	0.141 Semi-rigid						
A38P1NA-201-10	RG179, 187						
A38P1NA-205-10	RG179 D.S., 187						
A38J1BK-103-10	.086 Semi-Rigid	Bulkhead / <i>Gehäusedurchführung</i>					
A38J1BK-104-10	.141 Semi-rigid	Bulkhead / <i>Gehäusedurchführung</i>					
A38J1BK-201-10	RG316, 188, 174	Bulkhead / <i>Gehäusedurchführung</i>					
A38J1BK-205-10	RG179 D.S., 187	Bulkhead / <i>Gehäusedurchführung</i>					
A38J1NA-103-10	.086 Semi-Rigid						
A38J1NA-104-10	.141 Semi-rigid						
A38J1NA-201-10	RG179, 187						
A38J1NA-205-10	RG179 D.S., 187						
<b>Right Angled Cable Termination / Abgewinkelter Kabelanschluss</b>							
A25P2NA-103-10	50 Ohm	Brass <i>Messing</i>	Plug <i>Stift</i>	.086 Semi-Rigid			
A25P2NA-104-10				.141 Semi-Rigid			
A25P2NA-111-10				.047 Semi-Rigid			
A25P2NA-201-10				RG316, 188, 174			
A25P2NA-205-10				RG316, 188, 174 D.S.			
A25P2NA-206-10				RG178, 196			
A38P2NA-103-10				.086 Semi-Rigid			
A38P2NA-104-10				.141 Semi-Rigid			
A38P2NA-201-10				RG179			
A38P2NA-205-10				RG179 D.S.			
<b>Straight PCB Termination / Gerader Leiterplattenanschluss</b>							
A25J1PC-000-10	50 Ohm	Brass <i>Messing</i>	Jack <i>Buchse</i>		PCB Mount / <i>Leiterplatte</i>		
A25J1PC-000-11					PCB Mount / <i>Leiterplatte</i>		
A25J1SF-000-10					Surface Mount / <i>Oberflächenmontage</i>		
A38J1PC-000-10				75 Ohm		PCB Mount / <i>Leiterplatte</i>	
A38J1PC-000-11						PCB Mount / <i>Leiterplatte</i>	
A38J1SF-000-10			Surface Mount / <i>Oberflächenmontage</i>				
<b>Right Angled PCB Termination / Abgewinkelter Leiterplattenanschluss</b>							
A25J2PC-000-10	50 Ohm	Brass <i>Messing</i>	Jack <i>Buchse</i>		PCB Mount / <i>Leiterplatte</i>		
A38J2PC-000-10	75 Ohm				PCB Mount / <i>Leiterplatte</i>		
<b>Straight Edge Mounted / Leiterplatten Kantenmontage, gerade</b>							
A25J1EG-000-10	50 Ohm	Brass <i>Messing</i>	Jack <i>Buchse</i>		Edge mount / <i>Kantenmontage</i>		
A38J1EG-000-10	75 Ohm				Edge mount / <i>Kantenmontage</i>		



# MMCX Microminiature Coaxial Connectors

## MMCX Mikrominiaturkoaxialkontakte

### Technical Data

#### Technische Daten

##### Mechanical Data

##### Mechanische Daten

Mechanical Data <i>Mechanische Daten</i>	
Mating force <i>Steckkraft</i>	max. 15.2 N (3.4 lbs.)
Unmating force <i>Ziehkraft</i>	min. 6.2 N (1.4 lbs.)
Recommended temperature range <i>Empfohlener Temperaturbereich</i>	$-65\text{ °C} \leq \vartheta \leq 165\text{ °C}$ ( $-85\text{ °F} \leq \vartheta \leq 329\text{ °F}$ )
Mating cycles <i>Steckzyklen</i>	$\geq 500$

##### Electrical Data

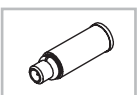
##### Elektrische Daten

Electrical Data <i>Elektrische Daten</i>	
Characteristic impedance <i>Wellenwiderstand</i>	50 $\Omega$
Frequency range <i>Frequenzbereich</i>	0 - 6 GHz
Insulation resistance <i>Isolationswiderstand</i>	$\geq 5000\text{ M}\Omega$
Contact resistance inner conductor <i>Durchgangswiderstand Innenleiter</i>	$\leq 5\text{ m}\Omega$
Contact resistance outer conductor <i>Durchgangswiderstand Außenleiter</i>	$\leq 3\text{ m}\Omega$
Dielectric Withstanding Voltage (DWV) at sea level <i>Prüfspannung (DWV) auf Meereshöhe</i>	$\geq 500\text{ VRSM}$

##### Materials and Platings

##### Materialien und Oberflächen

Materials and platings <i>Materialien und Oberflächen</i>	
Body material <i>Kontaktmaterial</i>	Brass <i>Messing</i>
Material center conductor <i>Material Innenleiter</i>	CuBe / Brass <i>CuBe / Messing</i>
Insulator <i>Isolator</i>	Teflon <i>Teflon</i>
Crimp ferrule <i>Crimphülse</i>	Cu alloy <i>Cu Legierung</i>
Center contact plating <i>Oberfläche Innenleiter</i>	Au over Ni <i>Au über Ni</i>

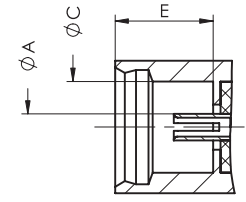
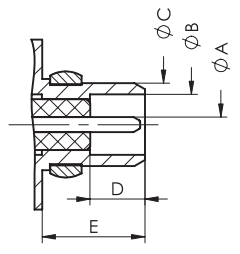


# MMCX Coaxial Connectors, Mating Area Dimensions

## MMCX Koaxialkontakte, Abmessungen Steckbereich

**Plug**  
*Stift*

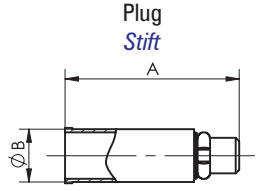
**Jack**  
*Buchse*



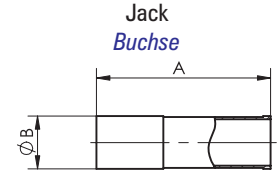
	Plug / <i>Stift</i>		Jack / <i>Buchse</i>	
	min.	max.	min.	max.
<b>A</b>	0,38 (0.015)	0,43 (0.017)	0,70 (0.028)	nom.
<b>B</b>	1,58 (0.062)	1,62 (0.064)	—	—
<b>C</b>	2,36 (0.093)	2,39 (0.094)	2,41 (0.095)	2,45 (0.096)
<b>D</b>	1,45 (0.057)	—	—	—
<b>E</b>	2,36 (0.093)	—	2,61 (0.103)	2,67 (0.105)

# Dimensions Straight Cable Termination, Semi-rigid (MMCX)

## Abmessungen gerader Kabelanschluss, semi-rigid (MMCX)

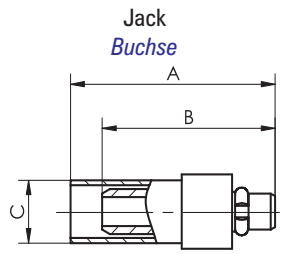


FCT Part Number <i>FCT Teilenummer</i>	A	B	Characteristic Impedance <i>Wellenwiderstand</i>	Suitable Cable <i>Verwendbares Kabel</i>
A22P1NA-103-10	11,5 (0.453)	3,5 (0.138)	50 Ohm	.086 Semi-rigid
A22P1NA-111-10	11,5 (0.453)	3,5 (0.138)		.047 Semi-rigid
A22J1NA-103-10	11,5 (0.453)	3,5 (0.138)		.086 Semi-rigid
A22J1NA-111-10	11,5 (0.453)	3,5 (0.138)		.047 Semi-rigid

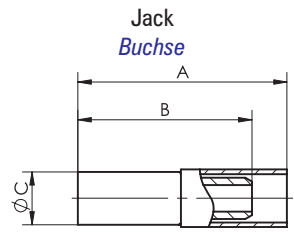


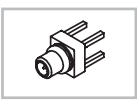
# Dimensions Straight Cable Termination (MMCX)

## Abmessungen gerader Kabelanschluss (MMCX)



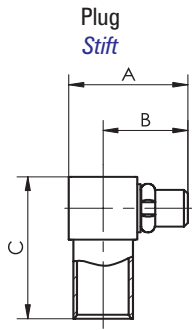
FCT Part Number <i>FCT Teilenummer</i>	A	B	C	Characteristic Impedance <i>Wellenwiderstand</i>	Suitable Cable <i>Verwendbares Kabel</i>
A22P1NA-201-10	12,9 (0.508)	10,9 (0.429)	4,5 (0.177)	50 Ohm	RG316, 188, 174
A22P1NA-205-10	12,9 (0.508)	10,9 (0.429)	4,5 (0.177)		RG316, 188, 174 D.S.
A22P1NA-206-10	12,9 (0.508)	10,9 (0.429)	4,5 (0.177)		RG178, 196
A22J1NA-201-10	16,0 (0.629)	13,7 (0.539)	3,5 (0.138)		RG316, 188, 174
A22J1NA-205-10	16,0 (0.629)	13,7 (0.539)	3,5 (0.138)		RG316, 188, 174 D.S.
A22J1NA-206-10	16,0 (0.629)	13,7 (0.539)	3,5 (0.138)		RG178, 196





## Dimensions Right Angled Cable Termination, Semi-rigid (MMCX)

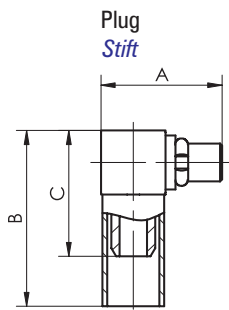
### Abmessungen abgewinkelter Kabelanschluss, semi-rigid (MMCX)



FCT Part Number FCT Teilenummer	A	B	C	Characteristic Impedance Wellenwiderstand	Suitable Cable Verwendbares Kabel
A22P2NA-103-10	7,0 (0.276)	5,3 (0.209)	9,0 (0.354)	50 Ohm	.086 Semi-rigid
A22P2NA-111-10	7,0 (0.276)	5,3 (0.209)	9,0 (0.354)		.047 Semi-rigid

## Dimensions Right Angled Cable Termination (MMCX)

### Abmessungen abgewinkelter Kabelanschluss (MMCX)



FCT Part Number FCT Teilenummer	A	B	C	Characteristic Impedance Wellenwiderstand	Suitable Cable Verwendbares Kabel
A22P2NA-201-10	7,0 (0.276)	11,0 (0.434)	7,9 (0.311)	50 Ohm	RG316, 188, 174
A22P2NA-205-10	7,0 (0.276)	11,0 (0.434)	7,9 (0.311)		RG316, 188, 174 D.S.
A22P2NA-206-10	7,0 (0.276)	11,0 (0.434)	7,9 (0.311)		RG178, 196

## Dimensions Straight PCB Termination (MMCX)

### Abmessungen gerader Leiterplattenanschluss (MMCX)

Plug  
Stift

FCT Part Number FCT Teilenummer	A	B	Characteristic Impedance Wellenwiderstand	Material Material
A22P1PC-000-10	7,5 (0.295)	4,5 (0.177)	50 Ohm	Brass
A22J1PC-000-10	7,5 (0.295)	4,5 (0.177)		Messing

Jack  
Buchse

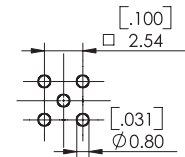
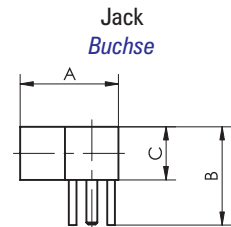




## Dimensions Right Angled PCB Termination (MMCX)

### Abmessungen abgewinkelter Leiterplattenanschluss (MMCX)

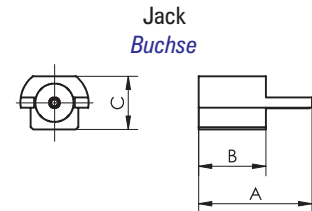
FCT Part Number <i>FCT Teilenummer</i>	A	B	C	Characteristic Impedance <i>Wellenwiderstand</i>	Material <i>Material</i>
A22J2PC-000-10	6,5 (0.256)	6,8 (0.268)	3,8 (0.150)	50 Ohm	Brass <i>Messing</i>



## Dimensions Straight Edge Mounted (MMCX)

### Abmessungen Leiterplatten Kantenmontage, gerade (MMCX)

FCT Part Number <i>FCT Teilenummer</i>	A	B	C	Characteristic Impedance <i>Wellenwiderstand</i>	Material <i>Material</i>
A22J1EG-000-10	7,5 (0.295)	4,5 (0.175)	3,5 (0.138)	50 Ohm	Brass <i>Messing</i>



## Product Line (MMCX)

### Lieferübersicht (MMCX)

FCT Part Number <i>FCT Teilenummer</i>	Characteristic Impedance <i>Wellenwiderstand</i>	Material <i>Material</i>	Inner Conductor <i>Innenleiter</i>	Suitable Cable <i>Verwendbares Kabel</i>	Mounting <i>Befestigung</i>
<b>Straight Cable Termination / Gerader Kabelanschluss</b>					
A22P1NA-103-10	50 Ohm	Brass <i>Messing</i>	Plug <i>Stift</i>	.086 Semi-rigid	
A22P1NA-111-10				.047 Semi-rigid	
A22P1NA-201-10				RG316, 188, 174	
A22P1NA-205-10				RG316, 188, 174 D.S.	
A22P1NA-206-10				RG178, 196	
A22J1NA-103-10			Jack <i>Buchse</i>	.086 Semi-rigid	
A22J1NA-111-10				.047 Semi-rigid	
A22J1NA-201-10				RG316, 188, 174	
A22J1NA-205-10				RG316, 188, 174 D.S.	
A22J1NA-206-10				RG178, 196	
<b>Right Angled Cable Termination / Abgewinkelter Kabelanschluss</b>					
A22P2NA-103-10	50 Ohm	Brass <i>Messing</i>	Plug <i>Stift</i>	.086 Semi-rigid	
A22P2NA-111-10				.047 Semi-rigid	
A22P2NA-201-10				RG316, 188, 174	
A22P2NA-205-10				RG316, 188, 174 D.S.	
A22P2NA-206-10				RG178, 196	
<b>Straight PCB Termination / Gerader Leiterplattenanschluss</b>					
A22P1PC-000-10	50 Ohm	Brass <i>Messing</i>	Plug <i>Stift</i>		PCB / <i>Leiterplatte</i>
A22J1PC-000-10			Jack <i>Buchse</i>		PCB / <i>Leiterplatte</i>
<b>Right Angled PCB Termination / Abgewinkelter Kabelanschluss</b>					
A22J2PC-000-10	50 Ohm	Brass <i>Messing</i>	Jack <i>Buchse</i>		PCB / <i>Leiterplatte</i>
<b>Straight Edge Mounted / Leiterplatten Kantenmontage, gerade</b>					
A22J1EG-000-10	50 Ohm	Brass <i>Messing</i>	Jack <i>Buchse</i>		PCB / <i>Leiterplatte</i>

# F Coaxial Connectors

## F Koaxialkontakte

### Technical Data

#### Technische Daten

##### Mechanical Data

##### Mechanische Daten

Mechanical Data <i>Mechanische Daten</i>	
Engagement torque <i>Verbindungs Drehmoment</i>	max. 0.226 Nm (2 inch-pounds)
Mating torque <i>Anzugsdrehmoment</i>	0.79 to 1.13 Nm (7 to 10 inch-pounds) <i>0.79 bis 1.13 Nm</i>
Recommended temperature range <i>Empfohlener Temperaturbereich</i>	-40 °C ≤ $\vartheta$ ≤ 85 °C (-40°F ≤ $\vartheta$ ≤ 185 °F)
Mating cycles <i>Steckzyklen</i>	≥ 100

##### Electrical Data

##### Elektrische Daten

Electrical Data <i>Elektrische Daten</i>	
Characteristic impedance <i>Wellenwiderstand</i>	75 Ω
Insulation resistance <i>Isolationswiderstand</i>	≥ 5000 MΩ
Contact resistance inner conductor <i>Durchgangswiderstand Innenleiter</i>	≤ 10 mΩ
Contact resistance outer conductor <i>Durchgangswiderstand Außenleiter</i>	≤ 1 mΩ
Dielectric Withstanding Voltage (DWW) at sea level <i>Prüfspannung (DWW) auf Meereshöhe</i>	≥ 1000 VRSM
Frequency range <i>Frequenzbereich</i>	0 - 3,0 GHz

##### Materials and Platings

##### Material und Oberflächen

Materials and Platings <i>Material und Oberflächen</i>	
Body material <i>Kontaktmaterial</i>	Brass / Die-cast zinc <i>Messing / Zink Druckguß</i>
Material center conductor <i>Material Innenleiter</i>	CuBe / Brass <i>CuBe / Messing</i>
Insulator <i>Isolator</i>	Teflon <i>Teflon</i>
Crimp ferrule <i>Crimphülse</i>	Cu alloy <i>Cu Legierung</i>
Center contact plating <i>Oberfläche Innenleiter</i>	Au over Ni <i>Au über Ni</i>

##### General Characteristics F-Type Connectors

##### Allgemeine Merkmale F-Typ Kontakte

F-type coaxial connectors provide a low contact resistance and an extremely low VSWR, for the frequency range direct current (DC) to 3.0 GHz. The female F-type connectors are designed to accept mating conductors with 0.56 mm to 1.07 mm (.022" to .047") diameter or RG-6 and RG-59 male F-type connectors. Our superior "Flat nosed" F-type connectors are available in various assembly, material and cable termination types. All F-type connectors are SCTE specified.

*F-Typ Koaxialsteckverbinder bieten einen niedrigen Kontaktwiderstand und einen extrem niedrigen VSWR Wert für Gleichspannung (DC) bis 3 GHz. Die weiblichen Steckverbinder akzeptieren Innenleiter von Ø 0,56 bis Ø 1,07 mm und sind gegensteckbar mit männlichen RG-6 und RG-59 F-Typ Steckverbindern. Unsere anspruchsvollen „Flat nosed“ F-Typ Koaxialsteckverbinder sind in den unterschiedlichsten Montage-, Material- und Kabelanschlussarten lieferbar. Alle F-Typ Steckverbinder sind SCTE spezifiziert.*

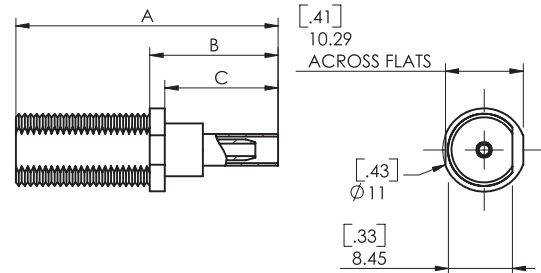


## Dimensions Straight Cable Termination, Bulkhead (F)

### Abmessungen gerader Kabelanschluss, Gehäusedurchführung (F)

FCT Part Number <i>FCT Teilenummer</i>	A	B	C	Characteristic Impedance <i>Wellenwiderstand</i>	Suitable Cable <i>Verwendbares Kabel</i>
A30J1BK-201-00	30,5 (1.200)	22,8 (0.897)	19,0 (0.748)	75 Ohm	RG179
A30J1BK-205-00	30,5 (1.200)	22,8 (0.897)	19,0 (0.748)		RD179

Jack  
Buchse

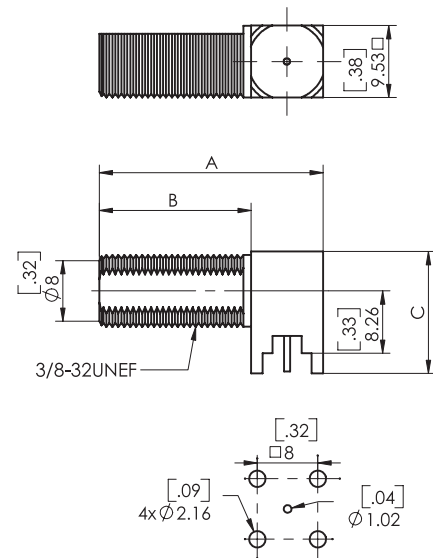


## Dimensions Right Angled PCB Termination (F)

### Abmessungen abgewinkelter Leiterplattenanschluss (F)

FCT Part Number <i>FCT Teilenummer</i>	A	B	C	Characteristic Impedance <i>Wellenwiderstand</i>	Mounting <i>Befestigung</i>
A30J2PC-000-10	29,6 (1.165)	20,1 (0.790)	16,1 (0.635)	75 Ohm	PCB Mount / <i>Leiterplatte</i>

Jack  
Buchse



## Product Line (F)

### Lieferübersicht (F)

FCT Part Number <i>FCT Teilenummer</i>	Characteristic Impedance <i>Wellenwiderstand</i>	Material <i>Material</i>	Inner Conductor <i>Innenleiter</i>	Suitable Cable <i>Verwendbares Kabel</i>	Mounting <i>Befestigung</i>
<b>Straight Cable Termination, Bulkhead / Gerader Kabelanschluss, Gehäusedurchführung</b>					
A30J1BK-201-00	75 Ohm	Brass or zinc	Jack	RG179	Bulkhead / <i>Gehäusedurchführung</i>
A30J1BK-205-00		Messing oder Zink	Buchse	RD179	Bulkhead / <i>Gehäusedurchführung</i>
<b>Right Angled PCB Termination / Abgewinkelter Leiterplattenanschluss</b>					
A30J2PC-000-10	75 Ohm	Brass <i>Messing</i>	Jack <i>Buchse</i>		PCB Mount / <i>Leiterplatte</i>



# Order Number Index

## Bestellnummernindex

A22J1EG-000-10	28	A24J1BK-210-10	10,14	A25P2NA-104-10	22,24
A22J1NA-103-10	26,28	A24J1FL-000-11	14	A25P2NA-111-10	22,24
A22J1NA-111-10	26,28	A24J1FL-000-17	13,14	A25P2NA-201-10	22,24
A22J1NA-201-10	26,28	A24J1FL-000-18	13	A25P2NA-205-10	22,24
A22J1NA-205-10	26,28	A24J1FL-103-10	12,14	A25P2NA-206-10	22,24
A22J1NA-206-10	26	A24J1FL-103-11	12,14	A26J1BK-201-10	17,18
A22J1PC-000-10	27,28	A24J1FL-104-10	12,14	A26J1BK-205-10	17,18
A22J2PC-000-10	28	A24J1FL-104-11	12,14	A26J1NA-201-10	16,18
A22P1NA-103-10	26,28	A24J1NA-103-10	9,14	A26J1NA-205-10	16,18
A22P1NA-111-10	26,28	A24J1NA-104-10	9,14	A26J1PC-000-10	17,18
A22P1NA-201-10	26,28	A24J1NA-111-10	9,14	A26J1SF-000-10	17,18
A22P1NA-205-10	26,28	A24J1NA-201-10	10,14	A26J2PC-000-10	18
A22P1NA-206-10	26,28	A24J1NA-205-10	10,14	A26P1NA-201-10	16,18
A22P1PC-000-10	27,28	A24J1NA-209-10	10,14	A26P1NA-205-10	16,18
A22P2NA-103-10	27,28	A24J1NA-210-10	10,14	A26P1PC-000-10	17,18
A22P2NA-111-10	27,28	A24J1PC-000-10	11,14	A26P1SF-000-10	17,18
A22P2NA-201-10	27,28	A24J1SF-000-10	13	A26P2NA-201-10	17,18
A22P2NA-205-10	27,28	A24J2PC-000-10	12,14	A26P2NA-205-10	17,18
A22P2NA-206-10	27,28	A24P1NA-103-10	9,14	A26P2NA-206-10	17,18
A23J1BK-103-10	10,14	A24P1NA-104-10	9,14	A29J1BK-201-10	17,18
A23J1BK-104-10	10,14	A24P1NA-104-11	9,14	A29J1BK-205-10	17,18
A23J1BK-111-10	10,14	A24P1NA-111-10	9,14	A29J1NA-201-10	16,18
A23J1BK-201-10	10,14	A24P1NA-201-10	10,14	A29J1NA-205-10	16,18
A23J1BK-205-10	10,14	A24P1NA-205-10	10,14	A29J1PC-000-10	17,18
A23J1BK-209-10	10,14	A24P1NA-209-10	10,14	A29J1SF-000-10	17,18
A23J1BK-210-10	10,14	A24P1NA-210-10	10,14	A29J2PC-000-10	18
A23J1FL-000-10	13,14	A24P2NA-103-10	11,14	A29P1NA-201-10	16,18
A23J1NA-103-10	9,14	A24P2NA-104-10	11,14	A29P1NA-205-10	16,18
A23J1NA-104-10	9,14	A24P2NA-111-10	11,14	A29P1PC-000-10	17,18
A23J1NA-111-10	9,14	A24P2NA-201-10	11,14	A29P1SF-000-10	17,18
A23J1NA-201-10	10,14	A24P2NA-205-10	11,14	A29P2NA-201-10	17,18
A23J1NA-205-10	10,14	A24P2NA-209-10	11,14	A29P2NA-205-10	17,18
A23J1NA-209-10	10,14	A24P2NA-210-10	11,14	A30J1BK-201-00	30
A23J1NA-210-10	10,14	A25J1BK-103-10	21,24	A30J1BK-205-00	30
A23J1PC-000-10	11,14	A25J1BK-104-10	21,24	A30J2PC-000-10	30
A23J2PC-000-10	12,14	A25J1BK-111-10	21,24	A38J1BK-103-10	21,24
A23P1NA-103-10	9,14	A25J1BK-201-10	24	A38J1BK-104-10	21,24
A23P1NA-104-10	9,14	A25J1BK-205-10	24	A38J1BK-201-10	24
A23P1NA-104-11	9,14	A25J1BK-206-10	24	A38J1BK-205-10	24
A23P1NA-111-10	9,14	A25J1EG-000-10	23,24	A38J1EG-000-10	23,24
A23P1NA-201-10	10,14	A25J1NA-103-10	20,24	A38J1NA-103-10	20,24
A23P1NA-205-10	10,14	A25J1NA-104-10	20,24	A38J1NA-104-10	20,24
A23P1NA-209-10	10,14	A25J1NA-111-10	20,24	A38J1NA-201-10	21,24
A23P1NA-210-10	10,14	A25J1NA-201-10	21,24	A38J1NA-205-10	21,24
A23P2NA-103-10	11,14	A25J1NA-205-10	21,24	A38J1PC-000-10	22,24
A23P2NA-104-10	11,14	A25J1NA-206-10	21,24	A38J1PC-000-11	22,24
A23P2NA-111-10	11,14	A25J1PC-000-10	22,24	A38J1SF-000-10	22,24
A23P2NA-201-10	11,14	A25J1PC-000-11	22,24	A38J2PC-000-10	23,24
A23P2NA-205-10	11,14	A25J1SF-000-10	22,24	A38P1NA-103-10	20,24
A23P2NA-209-10	11,14	A25J2PC-000-10	23,24	A38P1NA-104-10	20,24
A23P2NA-210-10	11,14	A25P1NA-103-10	20,24	A38P1NA-201-10	21,24
A24J1BK-103-10	10,14	A25P1NA-104-10	20,24	A38P1NA-205-10	21,24
A24J1BK-104-10	10,14	A25P1NA-111-10	20,24	A38P2NA-103-10	22,24
A24J1BK-111-10	10,14	A25P1NA-201-10	21,24	A38P2NA-104-10	22,24
A24J1BK-201-10	10,14	A25P1NA-205-10	21,24	A38P2NA-201-10	22,24
A24J1BK-205-10	10,14	A25P1NA-206-10	21,24	A38P2NA-205-10	22,24
A24J1BK-209-10	10,14	A25P2NA-103-10	22,24		